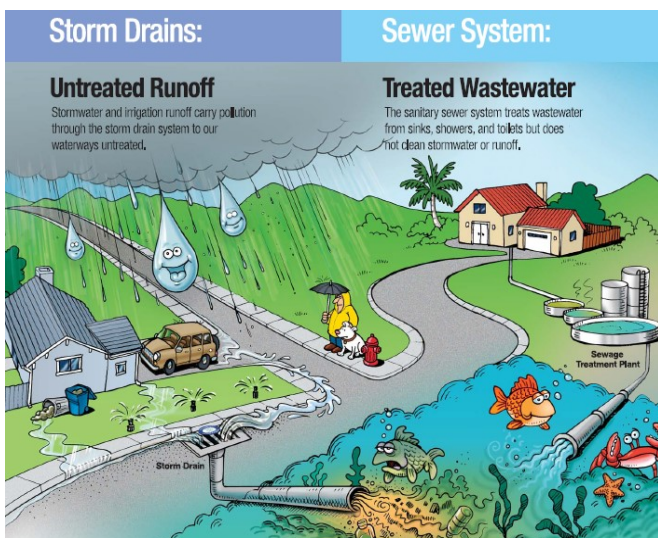


Make your home the **SOLUTION** to stormwater **POLLUTION!**



Homeowner's guide to healthy habits for clean water



As stormwater flows over driveways, lawns, and sidewalks, it picks up debris, chemicals, dirt, and other

pollutants. Stormwater can flow into a storm sewer system or directly to a lake, stream, river, wetland, or coastal water. Anything that enters a storm sewer system is discharged untreated into the waterbodies we use for swimming, fishing, and providing drinking water. Polluted runoff is the nation's greatest threat to clean water.

By practicing healthy household habits, homeowners can keep common pollutants like pesticides, pet waste, grass clippings, and automotive fluids off the ground and out of stormwater.

Do you know the difference between a **STORM DRAIN** and **SEWER**?

STORM DRAINS collect water from outside our homes and businesses and carry it, untreated, directly to streams and rivers.

SEWERS collect water from inside homes and businesses and carry it to treatment plants, where it is cleaned before it reaches creeks, streams and rivers.

Remember: only rain water should go into storm drains... not pet waste, trash, oil or other pollutants.

Healthy Household Habits for Clean Water



VEHICLE AND GARAGE

- Use commercial car wash or wash your car on a lawn or other unpaved surface to minimize the amount of dirty, soapy water flowing into the storm drain.
- Clean up car, boat, motorcycle, and other machinery and equipment spilled fluids with an absorbent material like sand. Don't rinse the spills into a nearby storm drain.
- Recycle used oil and other automotive fluids at participating service stations. Don't dump these chemicals down the drain or dispose of them in your trash.



SWIMMING POOL AND SPA

- Drain your swimming pool only when a test kit does not detect chlorine levels.
- Whenever possible, drain your pool or spa into the sanitary sewer system.
- Properly store pool and spa chemicals to prevent leaks and spills, preferably in a covered area to avoid exposure to stormwater.

LAWN AND GARDEN

- Use pesticides and fertilizers sparingly.
- Select native plants and grasses that are drought and pest resistant.
- Sweep up yard debris rather than hosing down areas. Compost or recycle yard waste when possible.
- Water your lawn during the cool times of the day, and don't let water run off into the storm drain.



HOME REPAIR AND IMPROVEMENT

- Before beginning an outdoor project, locate the nearest storm drains and **protect** them from debris and other materials.
- Sweep up and properly dispose of construction debris such as concrete.
- Use hazardous substances like paints, solvents, and cleaners in the smallest amounts possible. Clean up spills immediately, and dispose of the waste safely. Avoid leaks and spills.
- Purchase and use nontoxic, biodegradable, recycled, and recyclable products whenever possible.



- Clean paint brushes in a sink, not outdoors. Filter and reuse paint thinner when using oil based paints. Properly dispose of excess paints.
- Reduce the amount of paved area and increase the amount of vegetated area in your yard.

PET CARE

When walking your pet, remember to pick up the waste and dispose of it properly. Flushing pet waste is the best disposal method. Leaving pet waste on the ground increases public health risks by allowing harmful bacterial and nutrients to wash into the storm drain and eventually into local waterbodies.



SEPTIC SYSTEM USE AND MAINTENANCE

Have your septic system inspected by a professional at least every three years, and have the septic tank pumped as necessary. Care for the septic system drainfield by not driving or parking vehicles on it. Plant only grass over near the drainfield to avoid damage from roots. Flush responsibly. Flushing household chemicals like paints, pesticides, oil and antifreeze can destroy the biological treatment taking place in the system. Other items such as diapers, paper towels, and cat litter can clog the septic system and potentially damage components.

Storm Drains Connect to Waterbodies!



REMEMBER: Only rain down the drain!

For more information, visit:
www.epa.gov/npdes/stormwater



City of Great Bend
P.O. Box 1168
Great Bend, KS 67530
Phone: 620.793.4150